

COURT OF COMMON PLEAS  
State of Delaware

2021 Annual Report Statistical Information

## COURT OF COMMON PLEAS

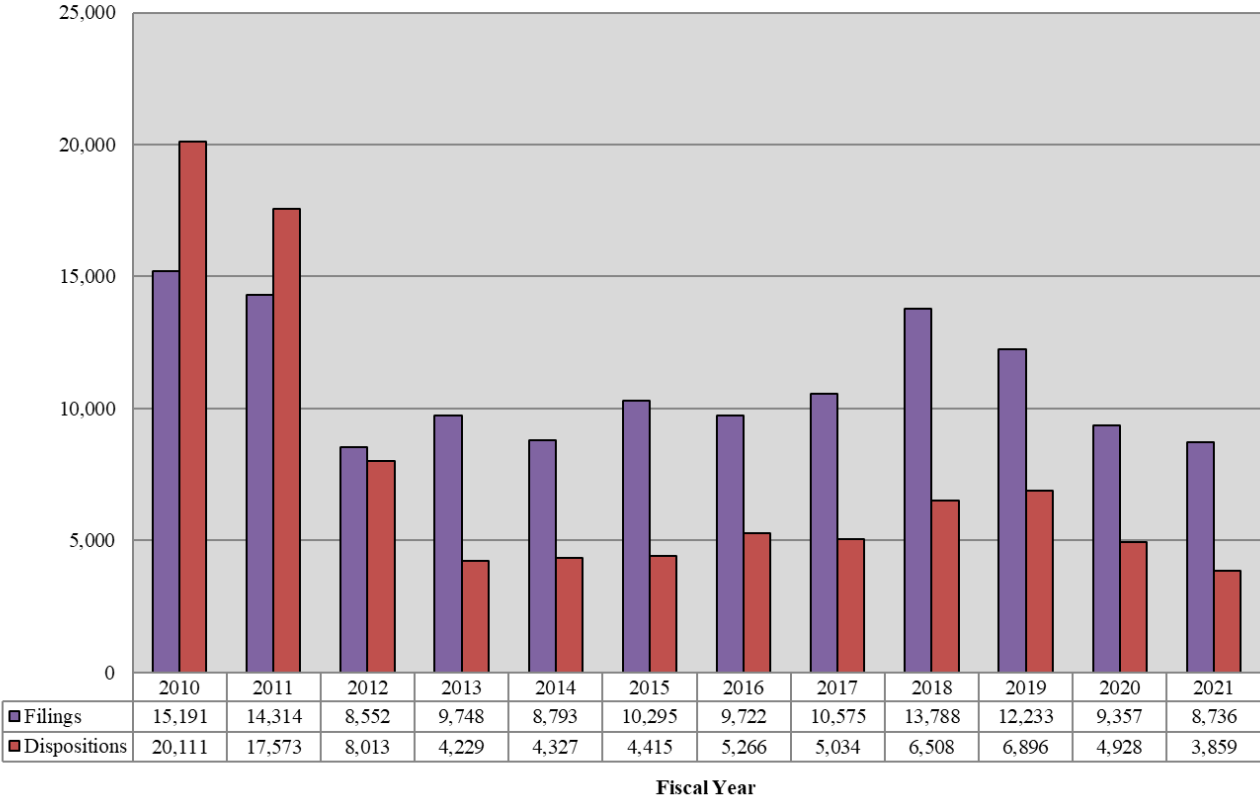
<b>Caseload Summary - Fiscal Years 2020-2021 - Civil Case Filings</b>				
	2020	2021	Change	% Change
New Castle County	5,499	5,337	-162	-2.9%
Kent County	1,922	1,794	-128	-6.7%
Sussex County	1,936	1,605	-331	-17.1%
<b>State</b>	<b>9,357</b>	<b>8,736</b>	<b>-621</b>	<b>-6.6%</b>

<b>Caseload Summary - Fiscal Years 2020-2021 - Civil Case Dispositions</b>				
	2020	2021	Change	% Change
New Castle County	2,741	2,274	-467	-17.0%
Kent County	1,057	822	-235	-22.2%
Sussex County	1,130	763	-367	-32.5%
<b>State</b>	<b>4,928</b>	<b>3,859</b>	<b>-1,069</b>	<b>-21.7%</b>

<b>Caseload Breakdowns - Fiscal Year 2021- Civil Case Filings</b>						
	Complaints		Civil Judgments, Name Changes & Appeals		Total	
New Castle County	3,955	74.1%	1,382	25.9%	5,337	100%
Kent County	1,243	69.3%	551	30.7%	1,794	100%
Sussex County	1,122	69.9%	483	30.1%	1,605	100%
<b>State</b>	<b>6,320</b>	<b>72.3%</b>	<b>2,416</b>	<b>27.7%</b>	<b>8,736</b>	<b>100%</b>

Percentages may not total 100 due to rounding.

### Court of Common Pleas 10-Year Civil Caseload Trend



## COURT OF COMMON PLEAS

<b>Caseload Summary - Fiscal Years 2020-2021 - Criminal Misdemeanor Case Filings</b>				
	2020	2021	Change	% Change
New Castle County	37,280	29,434	-7,846	-21.0%
Kent County	19,228	16,665	-2,563	-13.3%
Sussex County	22,654	20,638	-2,016	-8.9%
<b>State</b>	<b>79,162</b>	<b>66,737</b>	<b>-12,425</b>	<b>-15.7%</b>

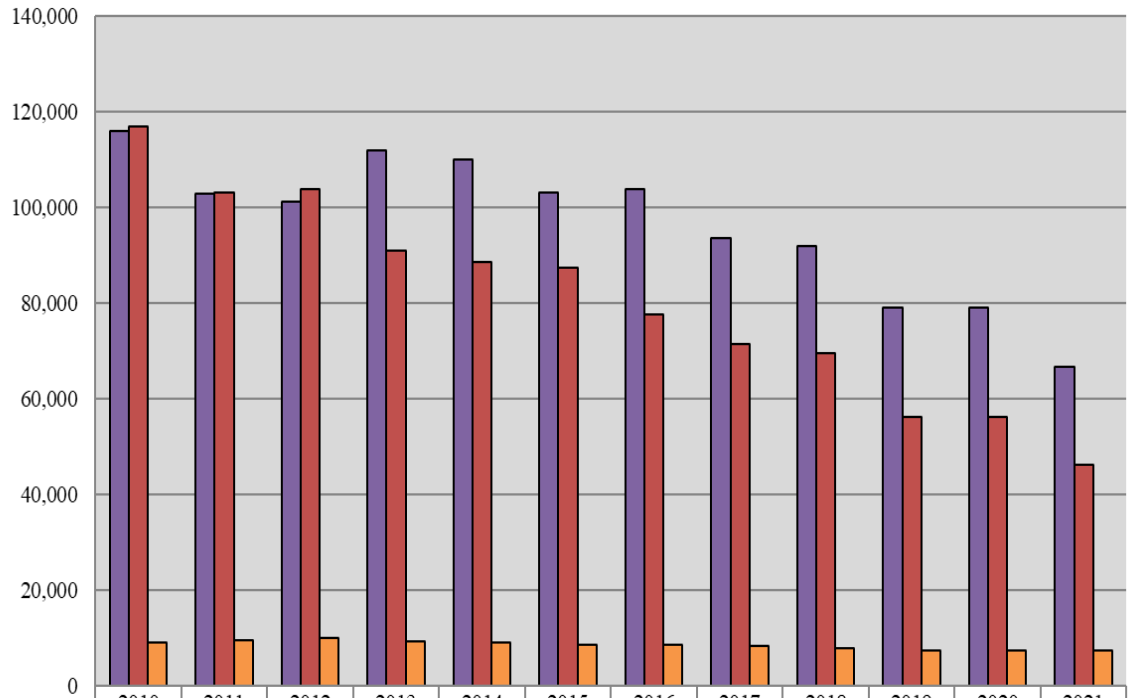
<b>Caseload Summary - Fiscal Years 2020-2021 - Criminal Misdemeanor Case Dispositions</b>				
	2020	2021	Change	% Change
New Castle County	25,927	21,400	-4,527	-17.5%
Kent County	15,477	9,999	-5,478	-35.4%
Sussex County	14,918	14,897	-21	-0.1%
<b>State</b>	<b>56,322</b>	<b>46,296</b>	<b>-10,026</b>	<b>-17.8%</b>

<b>Caseload Summary - Fiscal Years 2020-2021 - Criminal Preliminary Hearing Case Filings</b>				
	2020	2021	Change	% Change
New Castle County	3,837	4,039	202	5.3%
Kent County	1,640	1,616	-24	-1.5%
Sussex County	2,043	1,866	-177	-8.7%
<b>State</b>	<b>7,520</b>	<b>7,521</b>	<b>1</b>	<b>0.0%</b>

\*Includes Contempt of Court cases.

Source: Court Administrator, Court of Common Pleas; Administrative Office of the Courts.

## Court of Common Pleas 10-Year Criminal Caseload Trend



	2010	2011	2012	2013	2014	2015	2016	2017	2018	2019	2020	2021
■ Misdemeanor Filings	115,882	102,939	101,284	112,004	110,071	103,176	103,825	93,630	92,008	79,162	79,162	66,737
■ Misdemeanor Dispositions	116,926	103,209	103,802	90,873	88,507	87,366	77,673	71,401	69,504	56,322	56,322	46,296
■ Preliminary Hearings	9,066	9,590	9,917	9,398	9,011	8,621	8,689	8,402	7,798	7,520	7,520	7,521

**Fiscal Year**

## COURT OF COMMON PLEAS

### Caseload Summary - Fiscal Years 2020-2021 - Total Criminal Misdemeanor and Civil Case Filings

	2020	2021	Change	% Change
New Castle County	37,280	34,771	-2,509	-6.7%
Kent County	19,228	18,459	-769	-4.0%
Sussex County	22,654	22,243	-411	-1.8%
<b>State</b>	<b>79,162</b>	<b>75,473</b>	<b>-3,689</b>	<b>-4.7%</b>

### Caseload Summary - Fiscal Years 2020-2021 - Total Criminal Misdemeanor and Civil Case Dispositions

	2020	2021	Change	% Change
New Castle County	28,668	23,674	-4,994	-17.4%
Kent County	16,534	10,821	-5,713	-34.6%
Sussex County	16,048	15,660	-388	-2.4%
<b>State</b>	<b>73,535</b>	<b>50,155</b>	<b>-11,095</b>	<b>-15.1%</b>

Source: Court Administrator, Court of Common Pleas; Administrative Office of the Courts.

### Court of Common Pleas 10-Year Total Caseload Trend (Civil & Criminal)

